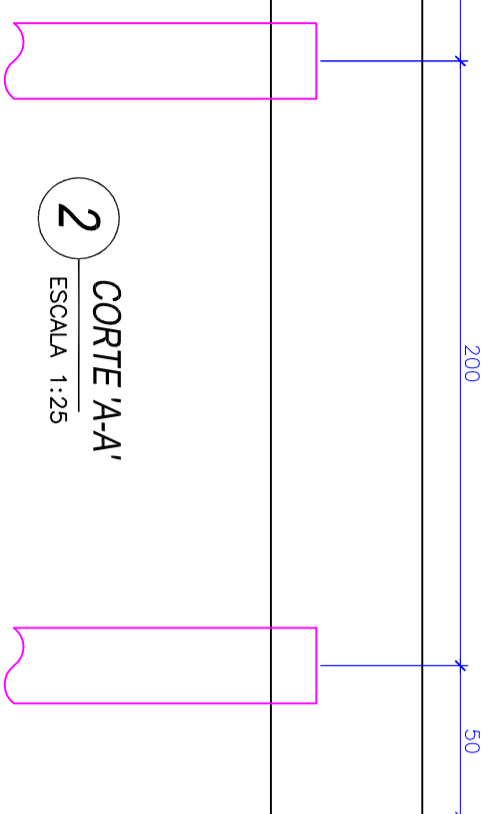
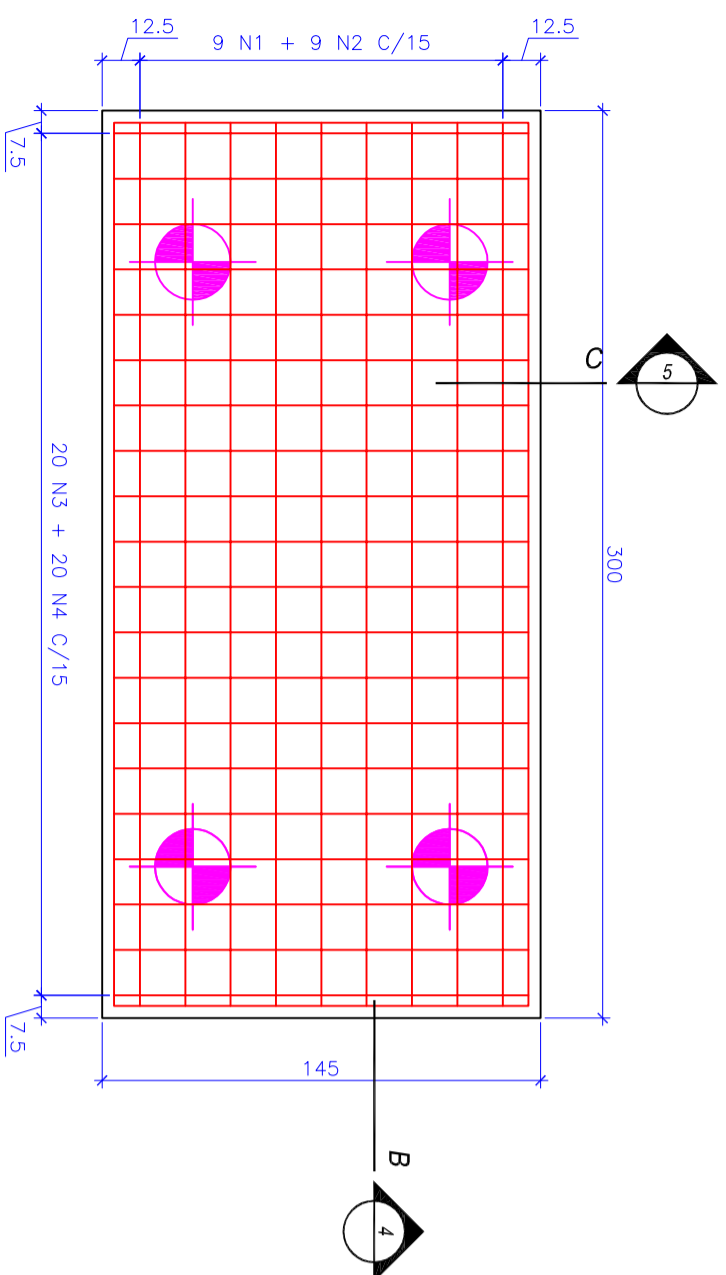


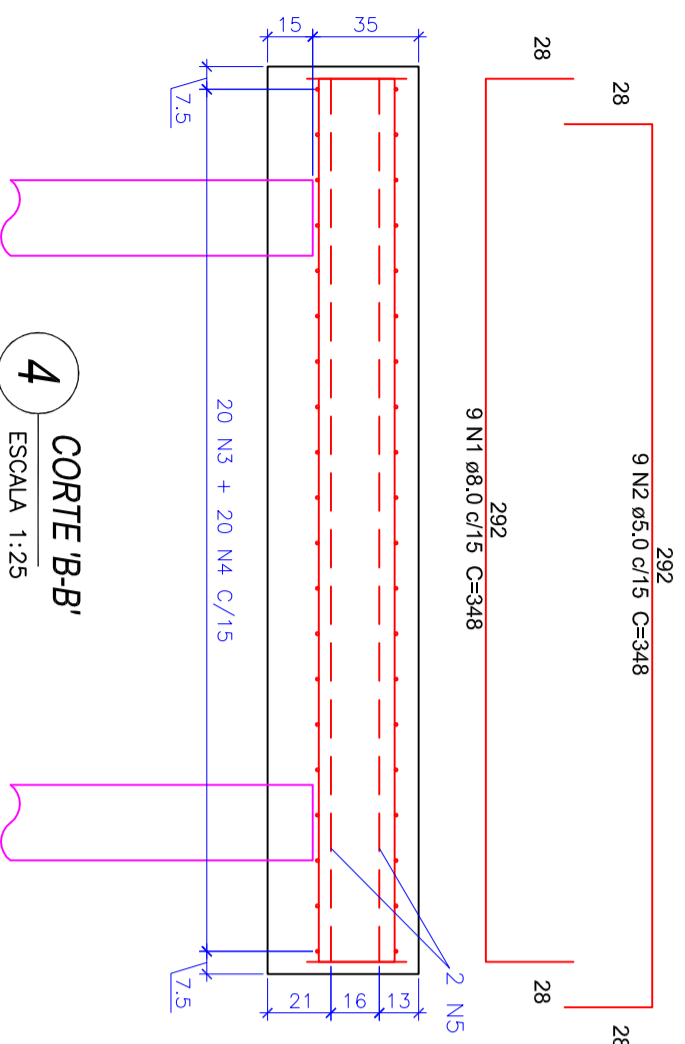
1 PLANTA FORMA
ESCALA 1:25



2 CORTE 'A-A'
ESCALA 1:25



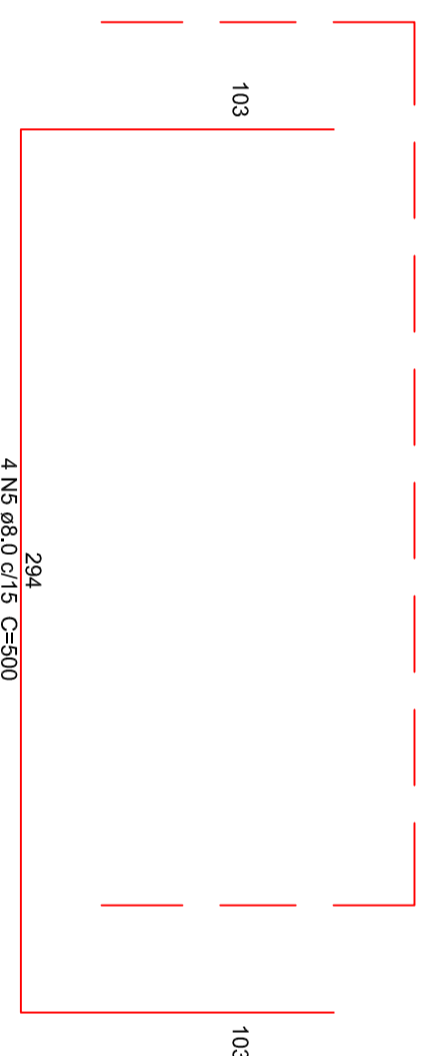
3 PLANTA ARMACAO
ESCALA 1:25



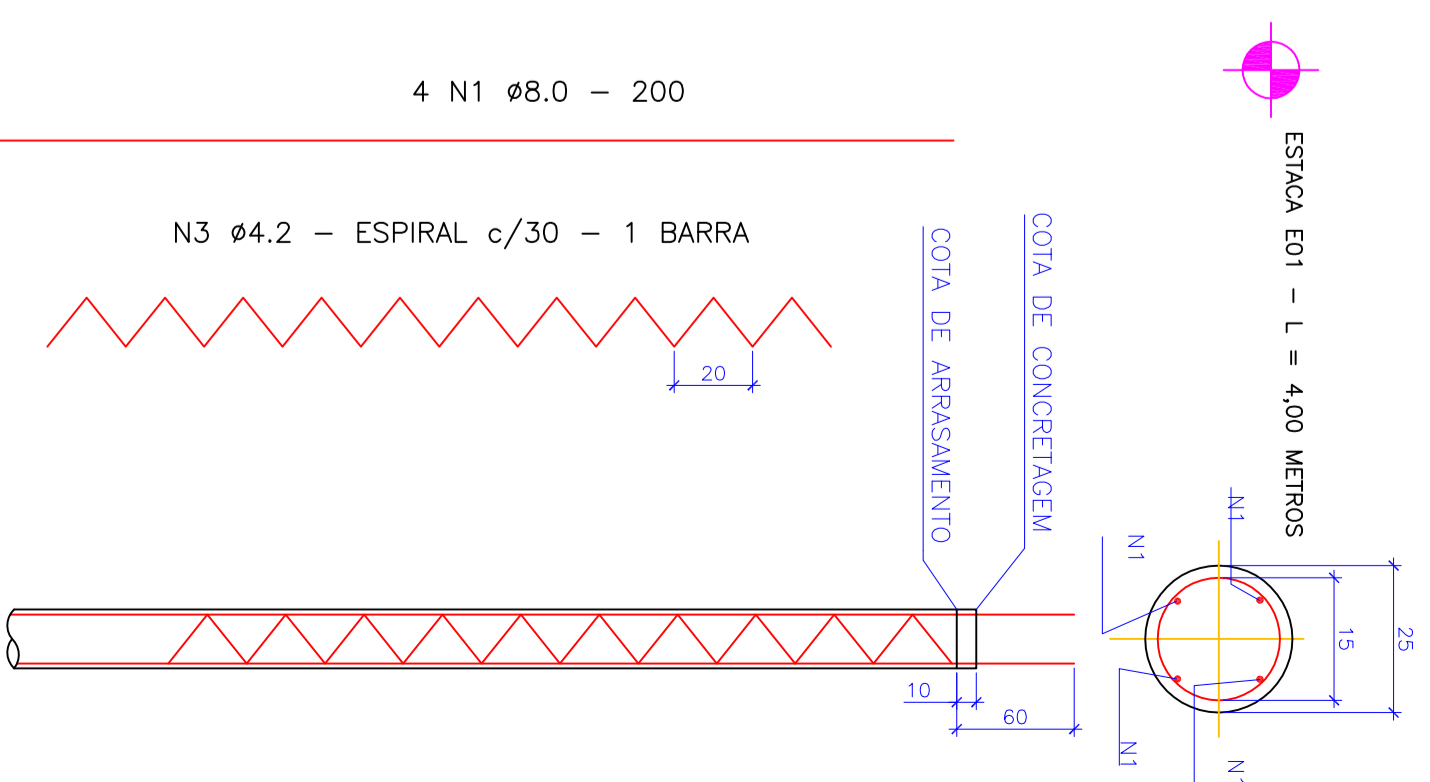
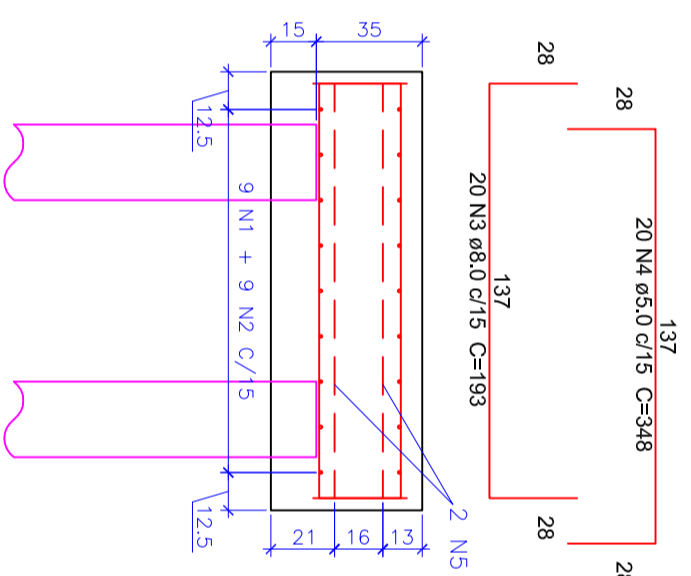
4 CORTE 'B-B'
ESCALA 1:25

LISTA DE FERROS PARA 1 BLOCO				
N	Ø	Q	COMPRIMENTOS (cm)	
			UNIT.	TOTAL
1	8.0	9	348	3132
2	5.0	9	348	3132
3	8.0	20	193	3860
4	5.0	20	193	3860
5	5.0	4	500	2000
RESUMO CA 50				
COMP. TOTAL (m)		PESOS		
8.0		69.92		0.40
				TOTAL+10%
				31
PESO TOTAL			31	
RESUMO CA 60				
COMP. TOTAL (m)		PESOS		
5.0		89.92		0.16
				TOTAL+10%
				16
PESO TOTAL			16	

LISTA DE FERROS PARA 1 ESTACA				
N	Ø	Q	COMPRIMENTOS (cm)	
			UNIT.	TOTAL
1	6.3	4	600	2400
2	4.2	1	1200	1200
RESUMO CA 50				
COMP. TOTAL (m)		PESOS		
6.3		24		0.250
				TOTAL+10%
				7
PESO TOTAL			7	
RESUMO CA 60				
COMP. TOTAL (m)		PESOS		
4.2		12.00		0.109
				TOTAL+10%
				1
PESO TOTAL			1	



5 CORTE 'C-C'
ESCALA 1:25



- NOTAS:
- MEDIDAS EM CENTÍMETROS
 - CONCRETO CLASSE C20 (20 MPa)
 - COBRIMENTO DA ARMADURA 3,0cm
 - EXECUÇÃO CONFORME NBR6118/NBR6120/NBR8681/NBR8983



Responsável Técnico
Eng. Civil Luiz Carlos A. Faria
CREA MS 012.330/D

CODIGO	DATA	CATEGORIA	ESCALA
-	AGO / 2012	FUNDACOES	1:25

PROJETO
ENG. CIVIL LUIZ CARLOS FARIA
LOCAL
BONITO - MS
TITULO
BLOCO PORTICO RELOGIO - FORMA E ARMACAO E ESTACAS